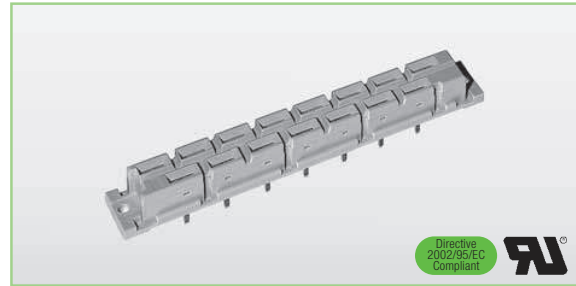


IEC 60603-2

2E Syscom Inc. - 115 Pleasant Street, Millis MA 02054  
 Tel. 508 794 1283 - www.2esyscom.com - e mail 2e@2esyscom.com

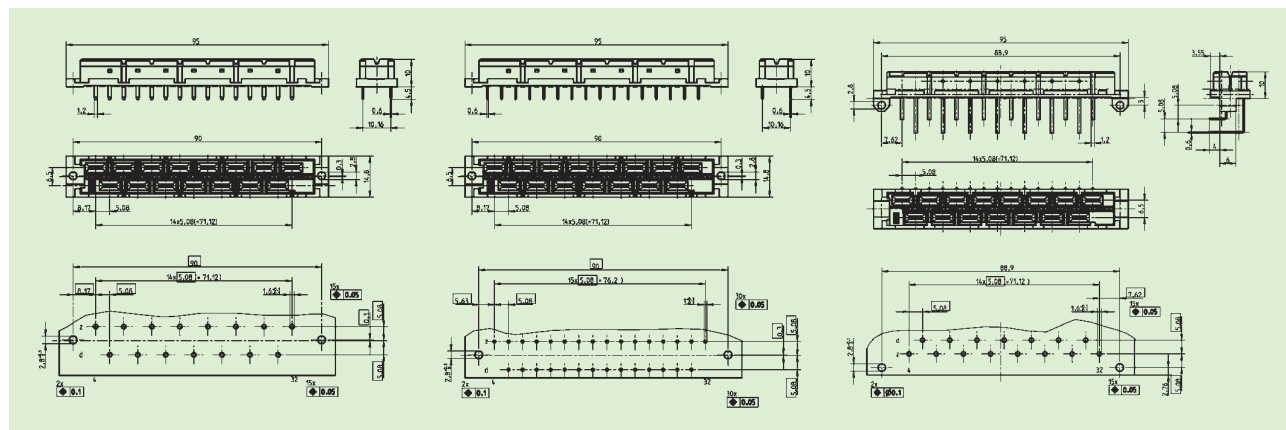
DIN 41612

- Bauform H15 in Ergänzung an die DIN 41612  
*Type H15 in addition to DIN 41612*
- Isolierkörper aus PBT  
*Material of insulating body: PBT*
- Flache Bauformen  
*Slim line versions*
- Mit integrierter Kodierung  
*With integrated coding device*



H15

Polzahl/no of contacts		15		Zubehör/Accessories
		Gütek./mating class		
Tauchlöt 4,5 mm <i>solder pin 4.5 mm</i>		1 (Ag)  1 (Sn)	05 H15ft4B-co <b>Order-No. 058917</b> 05 H15ft4SnB-co <b>Order-No. 0589112</b>	
Tauchlöt 13 mm <i>solder pin 13 mm</i>		1 (Ag)	05 H15ft13-co <b>Order-No. 052131</b>	
Tauchlöt 24 mm <i>solder pin 24 mm</i>		1 (Ag)	05 H15ft24-co <b>Order-No. 056161</b>	
Tauchlöt 4,5 mm Doppelpin <i>solder pin 4.5 mm double pin</i>		1 (Ag)	05 H15ftdB-co <b>Order-No. 058918</b>	
Invertiert 90° Tauchlöt <i>reversed 90° solder pin</i>		1 (Ag)	05 H15fw-co <b>Order-No. 056141</b>	
Invertiert 90° Tauchlöt, einreihig gewinkelt <i>reversed 90° solder pin, single row angled</i>		1 (Ag)	05 H15fw/k1-co <b>Order-No. 056241</b>	
Kodierkeile (grün) <i>coding key (green)</i>				05 H-cod <b>Order-No. 0560115600C99</b>



Technische Daten Seite 16 und 17.  
 Technical specifications page 16 and 17.

DIN 41612

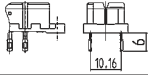

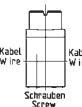

2E Syscom Inc. - 115 Pleasant Street, Millis MA 02054  
 Tel. 508 794 1283 - www.2esyscom.com - e mail 2e@2esyscom.com

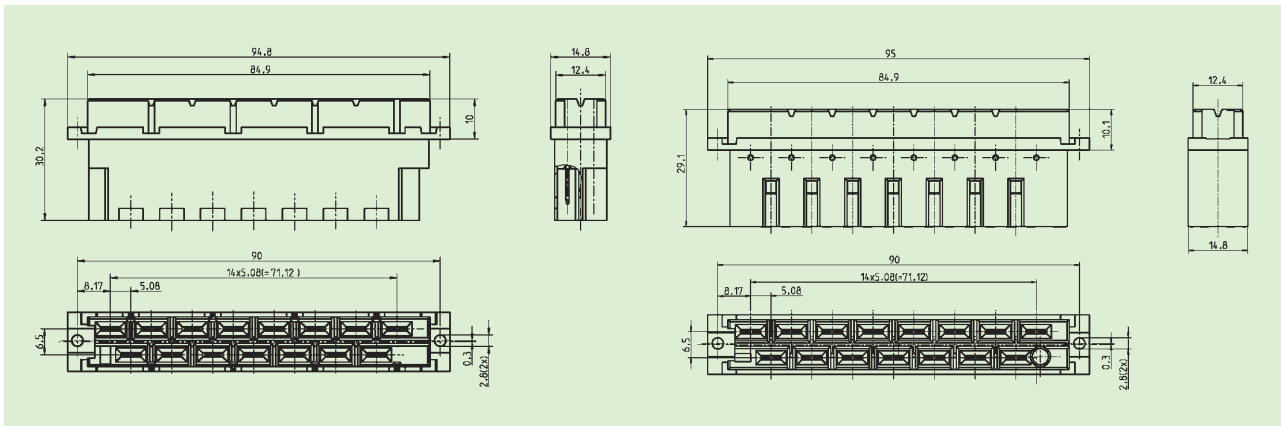
IEC 60603-2

H15



- Bauform H15 in Ergänzung an die DIN 41612  
*Type H15 in addition to DIN 41612*
- Isolierkörper aus PBT  
*Material of insulating body: PBT*
- Mit integrierter Kodierung  
*With integrated coding device*

Polzahl/no of contacts		15		Zubehör/Accessories
	Gütkl./mating class			
Handlöt <i>solder eyelet</i> 	1 (Ag)	05 H15fl-co Order-No. 052141		
Faston <i>faston</i> 	1 (Ag)  (Sn)	05 H15ffa-co Order-No. 056111 05 H15ffaSn-co Order-No. 056114		
Schraubanschluss < 2,5 mm <sup>2</sup> nicht kodierbar, Isolierkörper: Polycarbonat <i>screw cage &lt; 2.5 mm<sup>2</sup>                      without coding,                      insulating body: Polycarbonat</i> 	1 (Ag)	05 H15fsr Order-No. 052151		
Kodierkeile (grün) <i>coding key (green)</i> 				05 H-cod Order-No. 0560115600C99



Technische Daten Seite 16 und 17.  
 Technical specifications page 16 and 17.

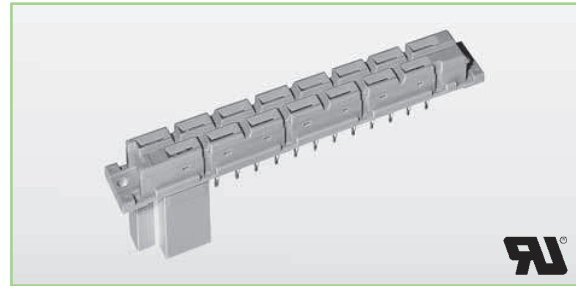


IEC 60603-2

2E Syscom Inc. - 115 Pleasant Street, Millis MA 02054  
 Tel. 508 794 1283 - www.2esyscom.com - e mail 2e@2esyscom.com

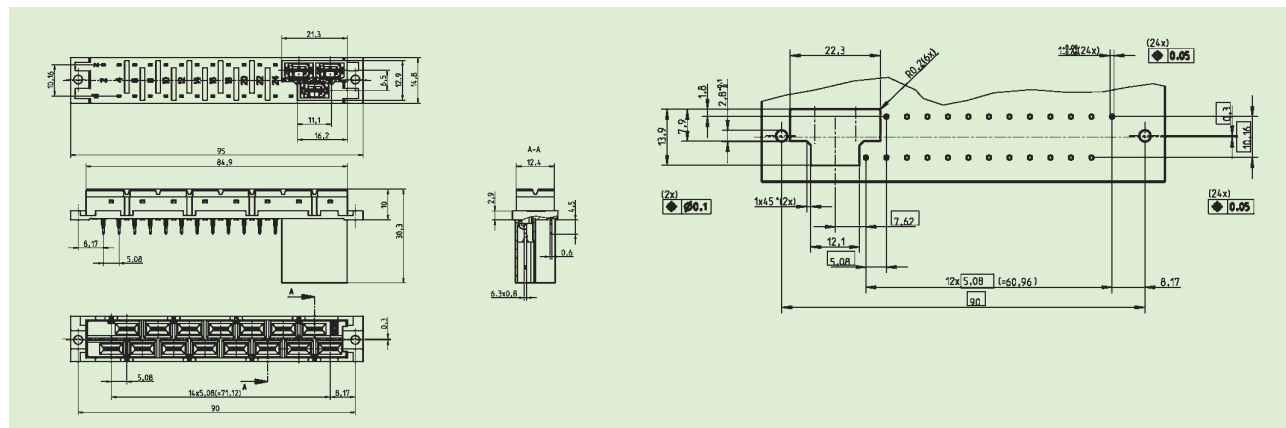
DIN 41612

- Isolierkörper aus PBT  
*Material of insulating body: PBT*
- Anschlussart im Netzeingangsbereich: Faston 6,3 x 0,8 mm  
*Contacts at input side: faston 6.3 x 0.8 mm*
- Anschlussart im Ausgangsbereich: Doppelpinkontakte (wahlweise in Tauchlöt- oder Einpresstechnik)  
*Contacts at output side: double pin contacts (for either in solder pin oder press-fit zone)*
- Einpresszone PbSn-Oberfläche  
*Press-fit zone PbSn-surface*



H15

Polzahl/no of contacts		15	
		Gütek./mating class	Zubehör/Accessories
12 Einpreßanschlüsse (Doppelpin) und 3 Fastonanschlüsse 12 press-fit pins (double pin) and 3 faston contacts		1 (Ag/Sn)	05 H15/12fdepAg/SnB+3fa-co Order-No. 0510581
Kodierkeile (grün) coding key (green)			05 H-cod Order-No. 0560115600C99



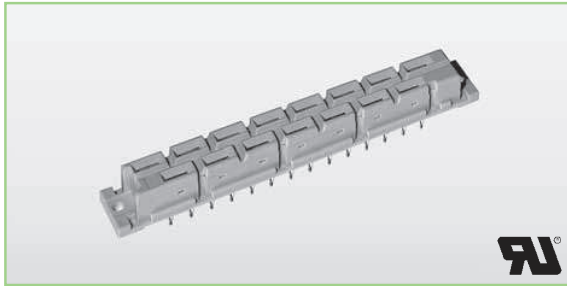
Technische Daten Seite 16 und 17.  
 Technical specifications page 16 and 17.

DIN 41612

2E Syscom Inc. - 115 Pleasant Street, Millis MA 02054  
 Tel. 508 794 1283 - www.2esyscom.com - e mail 2e@2esyscom.com

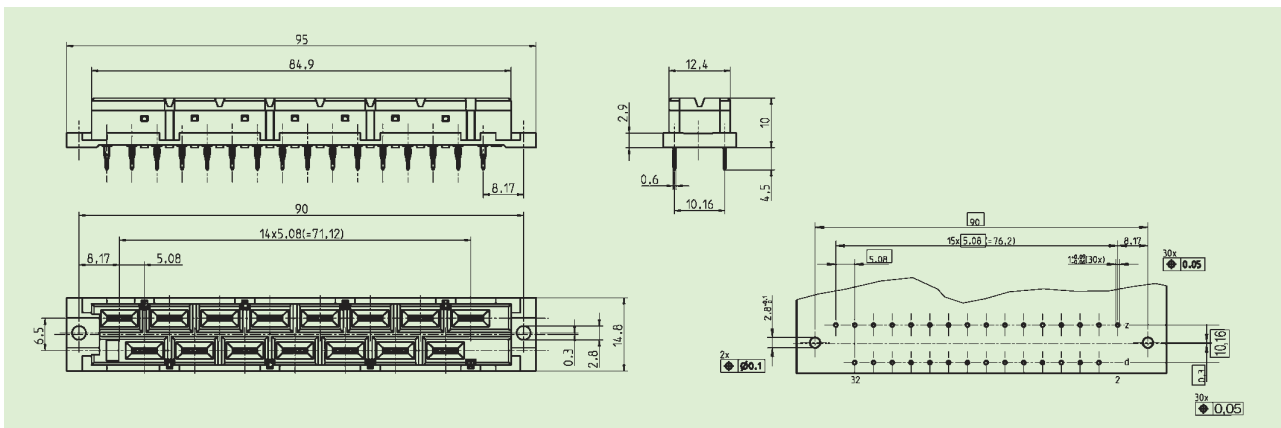
IEC 60603-2

H15



- Bauform H15 in Ergänzung an die DIN 41612  
*Type H15 in addition to DIN 41612*
- Flexible Einpresszone, PbSn-Oberfläche  
*Flexible press-fit zones, PbSn-surface*
- Isolierkörper aus PBT  
*Material of insulating body: PBT*
- Mit integrierter Kodierung  
*With integrated coding device*

Polzahl/no of contacts		15	
		Gütek./mating class	Zubehör/Accessories
Einpressanschluss (Doppelpin) <i>press-fit (double pin)</i>		1 (Ag/Sn)	05 H15fdepAg/Sn8-co <b>Order-No. 0589110</b>
Kodierkeile (grün) <i>coding key (green)</i>			05 H-cod <b>Order-No. 0560115600C99</b>



Technische Daten Seite 16 und 17.  
 Technical specifications page 16 and 17.

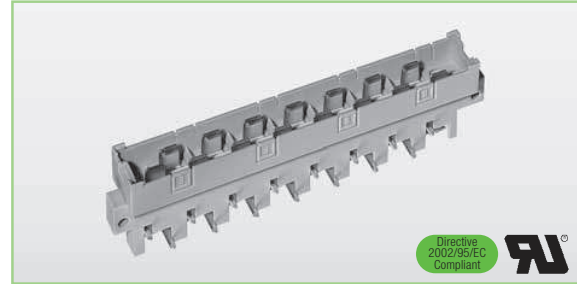


IEC 60603-2

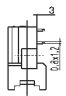
2E Syscom Inc. - 115 Pleasant Street, Millis MA 02054  
 Tel. 508 794 1283 - www.2esyscom.com - e mail 2e@2esyscom.com

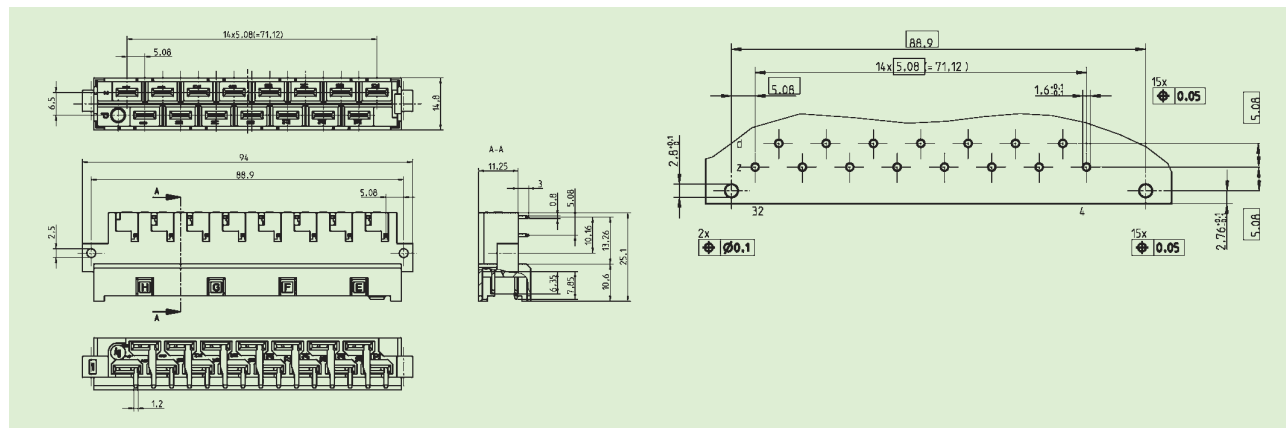
DIN 41612

- Bauform H15 in Ergänzung an die DIN 41612  
*Type H15 in addition to DIN 41612*
- Mit integrierter Kodierung  
*With integrated coding device*
- Umspritzte Kontakte und geschlossener Isolierkörper im Anschlussbereich zur Platine  
*The male connectors with fully shrouded contacts have a closed insulator to the PCB on termination side*
- Die Messerleisten sind flussmitteldicht  
*The male connectors are flux tight*



H15

Polzahl/no of contacts		15	14 + 1	13 + 2	
Voreilung/extended pin		-	z32	z4 + z32	
		Gütek./mating class			Zubehör/Accessories
90° Tauchlöt 90° solder pin		1 (Ag) Sn	05 H15mgwB-co <b>Order-No. 0510591</b>	05 H15mgwvz32B-co <b>Order-No. 0510596</b> 05 H15mgwvz32SnB-co <b>Order-No. 05105961</b>	05 H15mgwvz4+32B-co <b>Order-No. 05105917</b>



Technische Daten Seite 16 und 17.  
 Technical specifications page 16 and 17.

DIN 41612

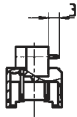
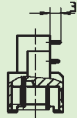
2E Syscom Inc. - 115 Pleasant Street, Millis MA 02054  
 Tel. 508 794 1283 - www.2esyscom.com - e mail 2e@2esyscom.com

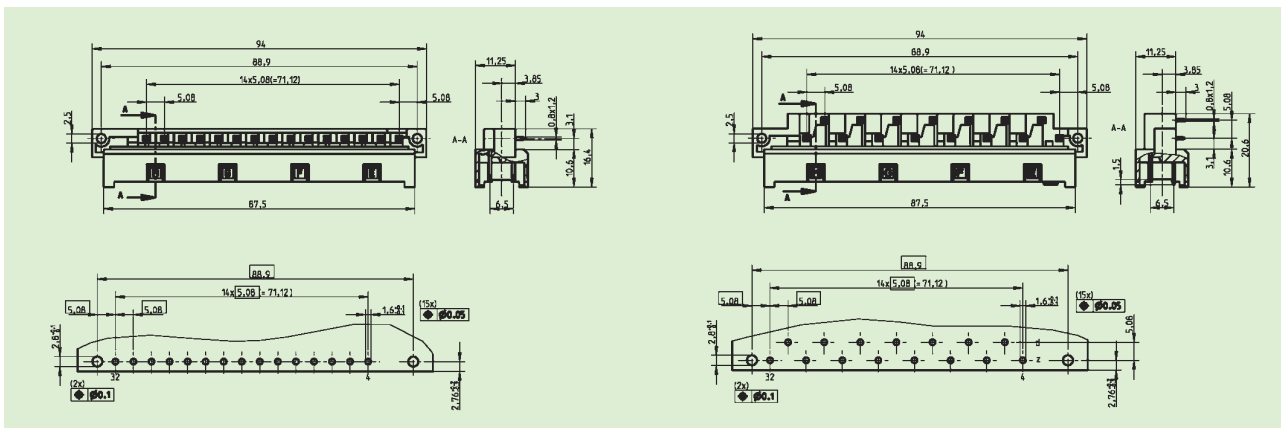
IEC 60603-2

H15



- Bauform H15 kurz in Ergänzung an die DIN 41612  
*Type H15 slim line in addition to DIN 41612*
- Umspritzte Kontakte, geschlossener Isolierkörper im Anschlussbereich zur Platine und flussmitteldicht  
*The male connectors with fully shrouded contacts have a closed insulator for the PCB on termination side and they are flux tight*
- Platzersparnis 1-reihige Version bis zu 60 %, 2-reihige Version bis zu 30 %  
*The single-row version provides a gain in space of up to 60%, the 2-row version provides a gain in space of up to 30%*

Polzahl/no of contacts		15	14 + 1	13 + 2
Voreilung/extended pin		-	z32	z4 + z32
		Gütek./mating class		
90° Tauchlöt, 1-reihig kurz Luft- und Kriechstrecken im Anschlussbereich verringert 90° solder pin, 1 in row, slim line Air leakage and creepage distance at termination area reduce		1 (Ag)	05 H15mgwvz32/k1 <b>Order-No. 0512155</b>	
90° Tauchlöt, 2-reihig kurz 90° solder pin, 2 in row, slim line		1 (Ag)	05 H15mgwvz32/k2 <b>Order-No. 0512160</b>	



Technische Daten Seite 16 und 17.  
 Technical specifications page 16 and 17.

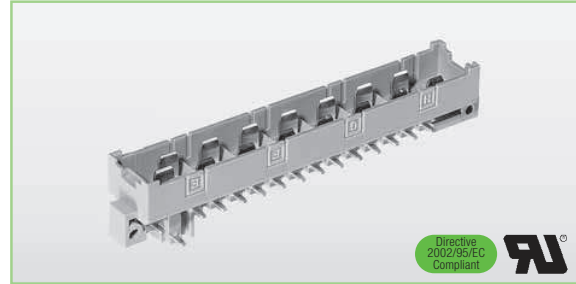


IEC 60603-2

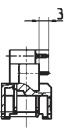
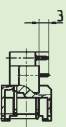
2E Syscom Inc. - 115 Pleasant Street, Millis MA 02054  
 Tel. 508 794 1283 - www.2esyscom.com - e mail 2e@2esyscom.com

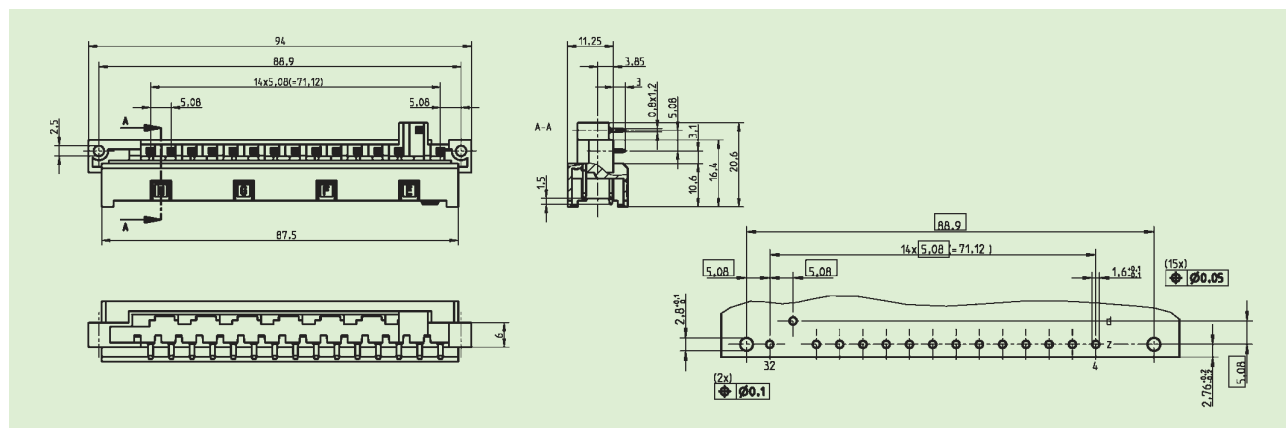
DIN 41612

- Bauform H15 kurz in Ergänzung an die DIN 41612  
*Type H15 slim line in addition to DIN 41612*
- Umspritzte Kontakte und geschlossener Isolierkörper im Anschlussbereich zur Platine und flussmitteldicht  
*The male connectors with fully shrouded contacts have a closed insulator for the PCB on termination side and they are flux tight*
- Mit voreilemendem Anschlusspin für Netzspannung  
*With extended pin for line voltage*



H15

Polzahl/no of contacts	15	14 + 1	13 + 2
Voreilung/extended pin	-	z32	z4 + z32
	Gütek./mating class		
90° Tauchlöt, 1-reihig kurz mit vorgesetztem Anschluss Pos. 30 Luft- und Kriechstrecken im Anschlussbereich verringert <i>90° solder pin, 1 in row with extended pin at pos. 30</i> <i>Air leakage and creepage distance at termination area reduce</i> 	1 (Ag)	05 H15mgwvz32/k1-hö30 Order-No. 0512197	
90° Tauchlöt, 1-reihig kurz mit vorgesetztem Anschluss Pos. 30, ohne Pin 26 Luft- und Kriechstrecken im Anschlussbereich verringert <i>90° solder pin, 1 in row with extended pin at pos. 30 without pin 26</i> <i>Air leakage and creepage distance at termination area reduce</i> 	1 (Ag)	05 H15mgwvz32/k1-hö30o26 Order-No. 0512171	



Technische Daten Seite 16 und 17.  
 Technical specifications page 16 and 17.