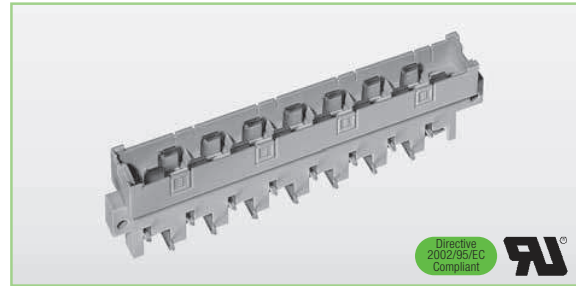


IEC 60603-2

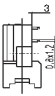
2E Syscom Inc. - 86 Kendall Avenue - Framingham, MA 01720
 Tel. 508 620 1678 - www.2esyscom.com - e mail 2e@2esyscom.com

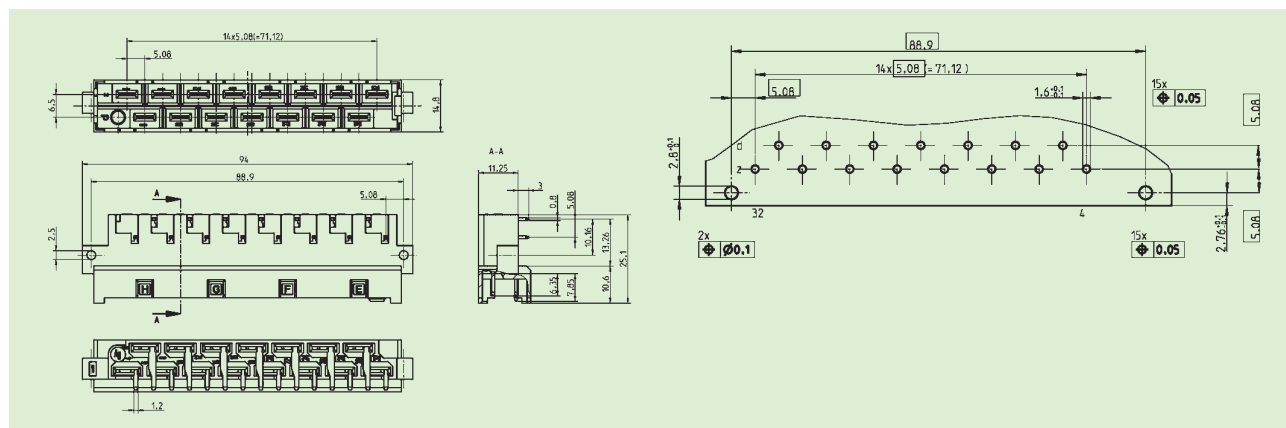
DIN 41612

- Bauform H15 in Ergänzung an die DIN 41612
Type H15 in addition to DIN 41612
- Mit integrierter Kodierung
With integrated coding device
- Umspritzte Kontakte und geschlossener Isolierkörper im Anschlussbereich zur Platine
The male connectors with fully shrouded contacts have a closed insulator to the PCB on termination side
- Die Messerleisten sind flussmitteldicht
The male connectors are flux tight



H15

Polzahl/no of contacts		15	14 + 1	13 + 2	
Voreilung/extended pin		-	z32	z4 + z32	
		Gütek./mating class			Zubehör/Accessories
90° Tauchlöt 90° solder pin		1 (Ag) Sn	05 H15mgwB-co Order-No. 0510591	05 H15mgwvz32B-co Order-No. 0510596 05 H15mgwvz32SnB-co Order-No. 05105961	05 H15mgwvz4+32B-co Order-No. 05105917



Technische Daten Seite 16 und 17.
 Technical specifications page 16 and 17.